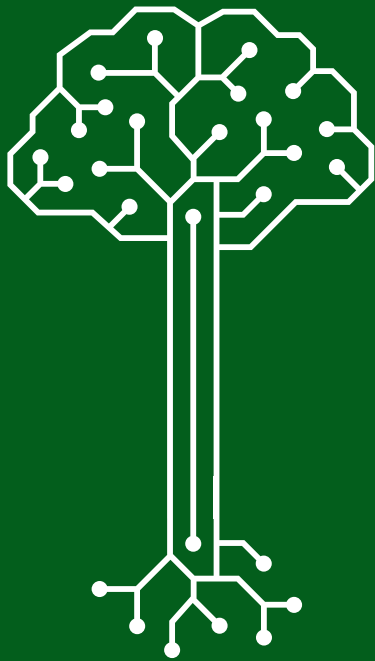


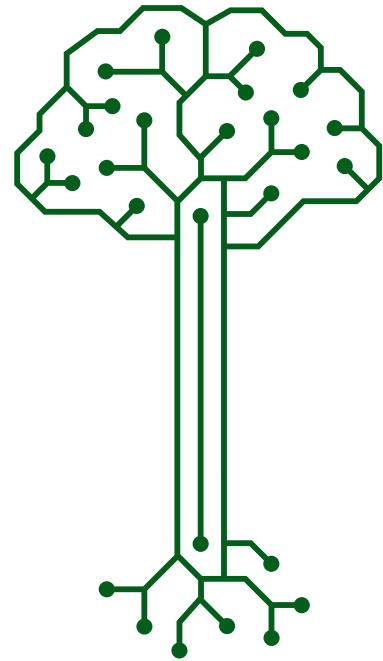
# FORGENIUS

Identity Guidelines

# Primary Logo



**FORGENIUS**



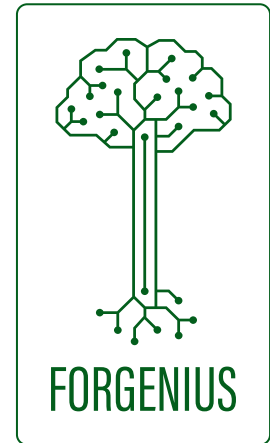
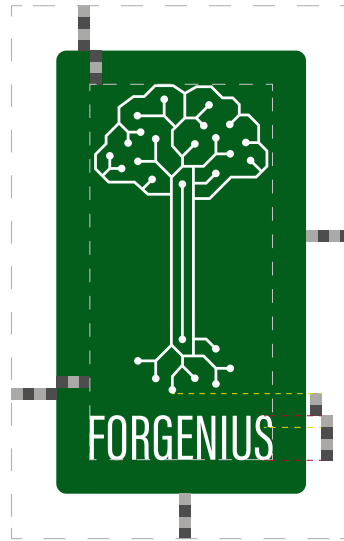
**FORGENIUS**

# Logo size and spacing

## Margins and preferences for use on light backgrounds

---

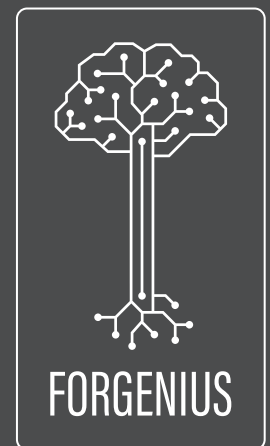
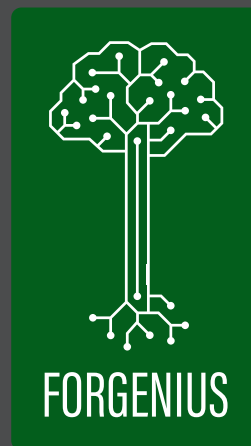
Minimum **Screen** size 60 px wide  
Minimum **Print** size 20 mm wide



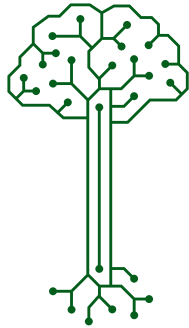
## Preferences for use on dark backgrounds

---

Wordmark logotype typeface:  
Acumin Variable Concept Extra Condensed



## Horizontal logo option



# FORGENIUS

Minimum **Screen** size 90 px wide

Minimum **Print** size 30 mm wide



# FORGENIUS

# Colors

## Primary color

**PANTONE 2427 C**

HEX: #035F1D

RGB: 3,95,29

CMYK: 97, 0, 69, 63

HBS: 137, 97, 37

HSL: 137, 94, 19

LAB: 35, -39, 30

Recommended colour references for use in publications, websites and social networks

Tints	Armony	Colds	Shades	Accents
579468	1C3E35	14403E	034F18	1A2766
81AF8E	315C4F	193649	023F13	5F3088
ABCAB4	467A69	1F2B54	02300F	5E0344
D5E4D9	5B9883	24215F	01200A	AE1B1B

Prioritize the use of the green-background and white-tree logo

# Typography

## Used in the Logo:

The FORGENIUS **Wordmark** typeface:

*Acumin Variable Concept*

*Extra Condensed Medium*

abcdefghijklmnopqrstuvwxyz

ABCDEFGHIJKLMNÑOPQRSTUVWXYZ

1234567890@!:[ ]\*" \$%&/()=?;: }

The FORGENIUS **Tagline** typeface:

*Acumin Variable Concept*

*Extra Condensed Medium*

abcdefghijklmnopqrstuvwxyz

ABCDEFGHIJKLMNÑOPQRSTUVWXYZ

1234567890@!:[ ]\*" \$%&/()=?;: }

## For publications, websites and social networks:

**Roboto font family**

abcdefghijklmnopqrstuvwxyz

ABCDEFGHIJKLMNÑOPQRSTUVWXYZ

1234567890@!:[ ]\*" \$%&/()=?;: }



This project has received funding from the European Union's Horizon 2020 research and innovation programme under grant agreement No 862221.

